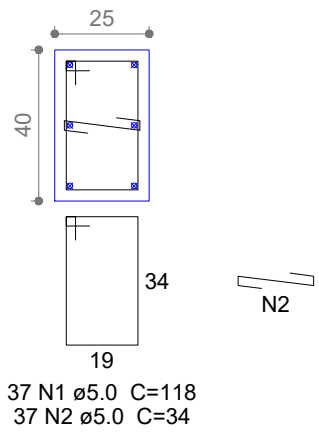


P1=P2

+3.00 - L2
ESC 1:20

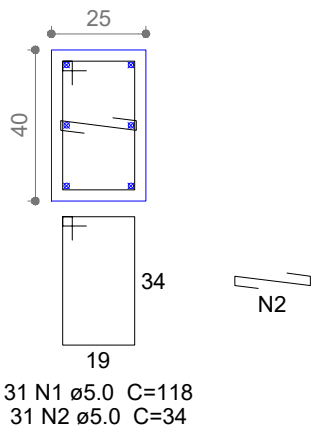


437
6 N3 ø10.0 C=437

440
37 N1 c/12

P3=P4

+3.00 - L2
ESC 1:20

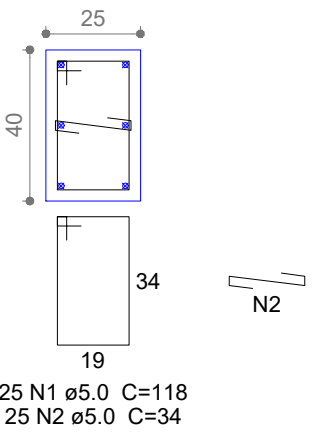


367
6 N3 ø10.0 C=367

370
31 N1 c/12

P5=P6

+3.00 - L2
ESC 1:20



297
6 N3 ø10.0 C=297

300
25 N1 c/12

Relação do aço

ELEMENTO	AÇO	N	DIAM (mm)	QUANT	C.UNIT (cm)	C.TOTAL (cm)
2xP1	CA60	1	5.0	74	118	8732
	CA60	2	5.0	74	34	2516
	CA50	3	10.0	12	437	5244
2xP3	CA60	1	5.0	62	118	7316
	CA60	2	5.0	62	34	2108
	CA50	3	10.0	12	367	4404
2xP5	CA60	1	5.0	50	118	5900
	CA60	2	5.0	50	34	1700
	CA50	3	10.0	12	297	3564

Resumo do aço

AÇO	DIAM (mm)	C.TOTAL (m)	QUANT (Barras)	PESO (kg)
CA50	10.0	132.2	12	81.5
CA60	5.0	282.8	-	43.6
PESO TOTAL (kg)				
CA50	81.5			
CA60	43.6			

Volume de concreto (C-25) = 2.22 m³
Área de forma = 8.86 m²

Saulo Marjorie Gonçalves Silva Bezerra
Engenheiro Civil
CREA/CE: 330959 / RNP: 061684178-8

PROJETO ESTRUTURAL

PILARES

resp. téc.: Saulo Marjorie Gonçalves Silva Bezerra

CREA: 330959CE

escalas indicadas

Construção da Praça no Distrito de Agrovila

folha

3/4